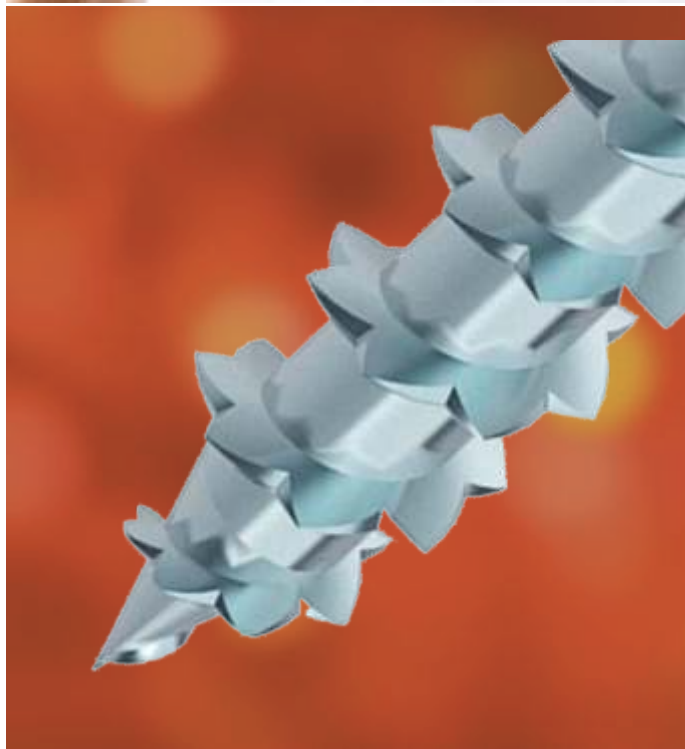




Fasteners for wood working industry

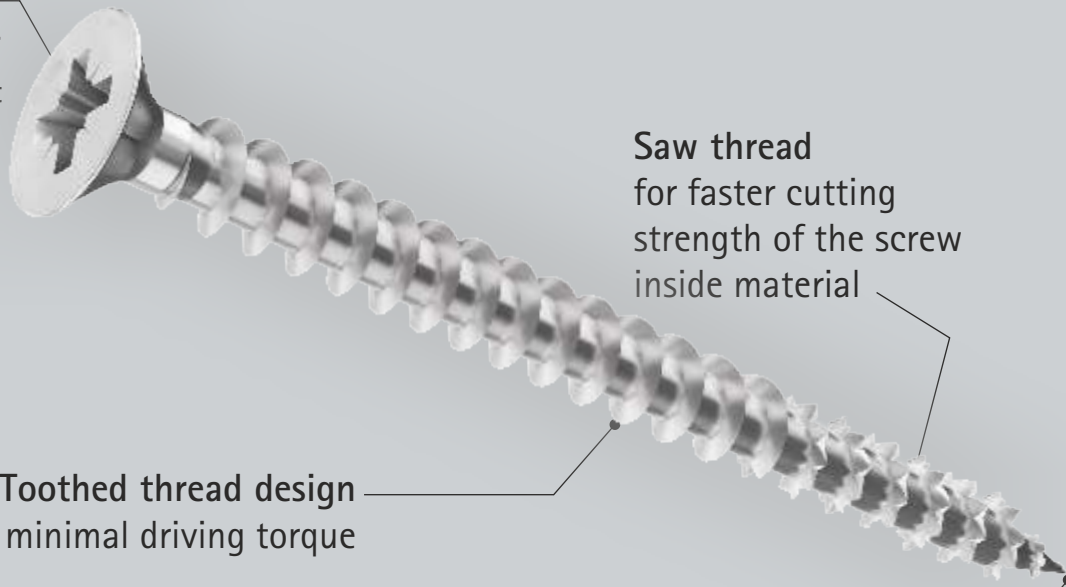
w.e.f. 1st April, 2019



**hepo**  
FASTENERS

A Hettich & Poddar JV

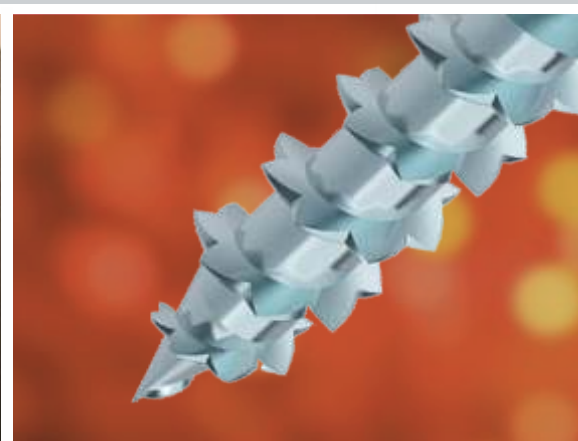
**Pozi Drive Head**  
provide a greater  
driving surface &  
decrease wear



**Saw thread**  
for faster cutting  
strength of the screw  
inside material

**Toothed thread design**  
for minimal driving torque

**Sharp tip**  
for improved positioning and  
starting on hard surfaces



## We hold it together, Lifelong: Screws for Woodworking Industry

Drive a screw in solid wood at normal torque without drilling a hole.

- ▶ Range: Stainless Steel, Zinc
- ▶ Finish: Nickel, Black
- ▶ Type: Saw & Regular Thread
- ▶ Pack: Retail & Industrial

[www.hepindia.com](http://www.hepindia.com)  
Toll Free: 1800 209 2096 (office hours)  
[customer\\_services@hepindia.com](mailto:customer_services@hepindia.com)



**Hettich**

**hepo**  
FASTENERS

A Hettich & Poddar JV

## Index

Hepo	Page
Zinc CSK Regular Thread Screw	04
Zinc Pan Head Regular Thread Screw	04
Stainless Steel (SS 304) CSK Regular Thread Screw	05
Self-Drilling Screw with Rib	05
Self-Tapping CSK Screw	05
Self-Tapping Pan Head Screw	05
Drywall Screw	06
Blackodised CSK Regular Thread Screw	06
Blackodised Pan Head Regular Thread Screw	06

Hettich	
Zinc CSK Saw Thread Screw	07
Zinc Pan Head Saw Thread Screw	07
Handle Fixing screw	08
Stainless Steel (SS 410) CSK Saw Thread Screw	08
Euro Countersunk & Hardware Fixing Screw	09
Rear Panel Fixing, CSK Nickel, Wooden, Dowel & Suspension hook	10

Heco	
Countersunk, Pan head, Multi Monti Screw	11

Accessories / Other	
Insert Hex socket ,T Nut & Connector	12
Drill Bit & Screw Driver	13
Conversion Chart	14

# Hepo CSK & Pan Head Screws

## Zinc Regular Thread

### Zinc CSK Regular Thread – Retail Packing



Material: Steel  
 Finish: Zinc Coated  
 Head: Countersunk  
 Drive: Pozi Drive  
 Thread: Regular  
 Packing: Retail

S.no.	Dimension	Gauge	Article no.	Unit	PU	MRP/100
1	Ø3.5 x 12	6	5 411 120 40	Pc	1000	57*
2	Ø3.5 x 16	6	5 411 120 50	Pc	1000	64
3	Ø3.5 x 20	6	5 411 120 60	Pc	1000	68
4	Ø3.5 x 25	6	5 411 120 70	Pc	1000	74
5	Ø3.5 x 30	6	5 411 120 80	Pc	1000	87
6	Ø3.5 x 35	6	5 411 120 90	Pc	1000	92*
7	Ø4.0 x 16	8	5 411 121 20	Pc	1000	64
8	Ø4.0 x 20	8	5 411 121 30	Pc	1000	76
9	Ø4.0 x 25	8	5 411 121 40	Pc	1000	85
10	Ø4.0 x 30	8	5 411 121 50	Pc	1000	97
11	Ø4.0 x 35	8	5 411 121 60	Pc	500	108
12	Ø4.0 x 40	8	5 411 121 70	Pc	500	132
13	Ø4.0 x 45	8	5 411 121 80	Pc	500	142*
14	Ø4.0 x 50	8	5 411 121 90	Pc	500	158
15	Ø5.0 x 50	10	5411 122 30	Pc	200	224
16	Ø5.0 x 60	10	5 411 122 40	Pc	200	315
17	Ø5.0 x 70	10	5 411 122 50	Pc	200	365

### Zinc Pan head Regular Thread–Retail Packing



Material: Steel  
 Finish: Zinc Coated  
 Head: Pan head  
 Drive: Pozi Drive  
 Thread: Regular  
 Packing: Retail

S.no.	Dimension	Gauge	Article no.	Unit	PU	MRP/100
1	Ø3.5 x 16	6	5 411 220 50	Pc	1000	75*
2	Ø4.0 x 16	8	5 411 221 20	Pc	1000	82
3	Ø4.0 x 25	8	5 411 221 40	Pc	1000	101
4	Ø4.0 x 30	8	5 411 221 50	Pc	500	129

### Zinc CSK Regular Thread–Industrial Packing



Material: Steel hardened  
 Finish: Zinc  
 Head: Countersunk  
 Drive: Pozi Drive  
 Thread: Regular  
 Packing: Industrial

S.no.	Dimension	Gauge	Article no.	Unit	PU	MRP/100
1	Ø3.0 x 12	5	9 193 028 00	Pc	43000	40*
2	Ø3.5 x 12	6	9 193 029 00	Pc	31000	41*
3	Ø3.5 x 16	6	9 193 030 00	Pc	25000	41
4	Ø3.5 x 20	6	9 193 071 00	Pc	22000	45
5	Ø3.5 x 25	6	9 193 072 00	Pc	17000	51
6	Ø3.5 x 30	6	9 193 073 00	Pc	14500	59
7	Ø4.0 x 16	8	9 193 074 00	Pc	19000	49
8	Ø4.0 x 20	8	9 193 075 00	Pc	16000	52
9	Ø4.0 x 25	8	9 193 076 00	Pc	13000	60
10	Ø4.0 x 30	8	9 193 077 00	Pc	11000	69
11	Ø4.0 x 35	8	9 19307 800	Pc	10000	77
12	Ø4.0 x 40	8	9 19307 900	Pc	8000	86
13	Ø4.0 x 50	8	9 1930 8000	Pc	6000	102

### Zinc Pan head Regular Thread–Industrial Packing



Material: Steel hardened  
 Finish: Zinc  
 Head: Pan head  
 Drive: Pozi Drive  
 Thread: Regular  
 Packing: Industrial

S.no.	Dimension	Gauge	Article no.	Unit	PU	MRP/100
1	Ø3.5 x 12	6	9 193 091 00	Pc	22000	46*
2	Ø3.5 x 16	6	9 193 092 00	Pc	20000	52*
3	Ø4.0 x 16	8	9 193 093 00	Pc	15000	62*
4	Ø4.0 x 20	8	9 216 225 00	Pc	12000	72*
5	Ø4.0 x 25	8	9 193 094 00	Pc	10000	81*
6	Ø4.0 x 30	8	9 194 178 00	Pc	9000	97*

\*Subject to stock availability/ on request basis

# Hepo Screws

## Stainless Steel 304 & Self Drilling Screw

### Self Tapping Screw

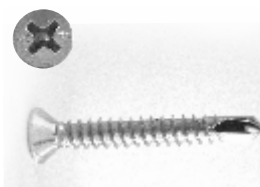
#### Stainless Steel CSK Regular Thread-Retail Packing



Material SS-304  
 Finish Stainless Steel  
 Head Countersunk  
 Drive Phillips Drive  
 Thread Regular  
 Packing Retail

S.no.	Dimension	Gauge	Article no.	Unit	PU	MRP/100
1	ø3.5 x 16	6	926509900	Pc	1000	111
2	ø3.5 x 20	6	926510000	Pc	1000	125
3	ø3.5 x 25	6	926513100	Pc	1000	160
4	ø3.5 x 35	6	926513200	Pc	1000	225
5	ø4.0 x 16	8	926513300	Pc	1000	150
6	ø4.0 x 20	8	926513400	Pc	1000	165
7	ø4.0 x 30	8	926513500	Pc	1000	240
8	ø4.0 x 35	8	926513600	Pc	1000	270
9	ø4.0 x 40	8	926513700	Pc	1000	310
10	ø5.0 x 60	10	926513800	Pc	500	725
11	ø5.0 x 70	10	926513900	Pc	500	760

#### Self Drilling Screw With Rib-Retail Packing



Material Steel  
 Finish Zinc  
 Head Countersunk  
 Drive Phillips Drive  
 Thread Self Drilling  
 Packing Retail

S.no.	Dimension	Article no.	Unit	PU	MRP/100
1	M3.5 x 13	926108200	Pc	1000	66
2	M3.5 x 16	926108300	Pc	1000	72
3	M3.5 x 19	926108400	Pc	1000	78
4	M3.5 x 25	926108600	Pc	1000	88
5	M3.5 x 32	926108700	Pc	1000	112
6	M4.2 x 13	926109100	Pc	1000	81
7	M4.2 x 16	926109200	Pc	1000	89
8	M4.2 x 19	926109300	Pc	1000	95
9	M4.2 x 25	926109400	Pc	1000	110
10	M4.2 x 32	926109500	Pc	1000	134
11	M4.2 x 40	926109700	Pc	1000	172
12	M4.2 x 50	926120800	Pc	500	200
13	M4.8 x 50	926121200	Pc	300	296
14	M4.8 x 70	926121400	Pc	300	396
15	M4.8 x 100	926121500	Pc	200	554

#### Self Tapping Screw Countersunk\*-Retail Packing



Material Steel  
 Finish Zinc  
 Head Countersunk  
 Drive Pozi Drive  
 Thread Self Tapping  
 Packing Retail

S.no.	Dimension	Gauge	Article no.	Unit	PU	MRP/100
1	Ø3.5 x 13	6	5 111 133 30	Pc	1000	52
2	Ø3.5 x 16	6	5 111 133 00	Pc	1000	59
3	Ø3.5 x 20	6	5 111 138 20	Pc	1000	67
4	Ø3.5 x 25	6	5 111 138 30	Pc	1000	80
5	Ø3.5 x 35	6	5 111 138 50	Pc	1000	101
6	Ø3.5 x 50	6	5 111 139 50	Pc	500	138

#### Self Tapping Screw Pan head\*-Retail Packing



Material Steel  
 Finish Zinc  
 Head Pan head  
 Drive Pozi Drive  
 Thread Self Tapping  
 Packing Retail

S.no.	Dimension	Gauge	Article no.	Unit	PU	MRP/100
1	Ø3.5 x 25	6	5 111 230 70	Pc	1000	92
2	Ø4.2 x 19	8	5 111 234 30	Pc	1000	108

\*Subject to stock availability/ on request basis

# Hepo Screws

## Drywall Screw & Blackodised Chipboard Screw

### Drywall Screw –Retail Packing



Material: Steel  
 Finish: Black  
 Drive: Phillips Drive  
 Thread: Fine Thread  
 Packing: Retail

S.no.	Dimension	Gauge	Article no.	Unit	PU	MRP/100
1	M3.5x20	3	926247900	Pc	1000	51
2	M3.5x25	3	926248000	Pc	1000	59
3	M3.5x30	6	926251100	Pc	1000	71
4	M3.5x35	6	926251200	Pc	1000	79
5	M3.5x40	6	926251300	Pc	500	85
6	M3.5x45	6	926251400	Pc	500	96
7	M3.5x50	6	926251500	Pc	500	105

### Blackodised Countersunk–Industrial Packing



Material: Steel  
 Finish: Blackodised  
 Head: Countersunk  
 Drive: Pozi Drive  
 Thread: Regular  
 Packing: Industrial

S.no.	Dimension	Gauge	Article no.	Unit	PU	MRP/100
1	Ø3.5 x 12	6	9 215 108 00	Pc	31000	34
2	Ø3.5 x 16	6	9 215 109 00	Pc	25000	38
3	Ø3.5 x 20	6	9 215 110 00	Pc	22000	42
4	Ø3.5 x 25	6	9 215 111 00	Pc	17000	51
5	Ø3.5 x 30	6	9 215 112 00	Pc	14500	58*
6	Ø4.0 x 16	8	9 236 639 00	Pc	19000	54
7	Ø4.0 x 20	8	9 236 641 00	Pc	16000	62*
8	Ø4.0 x 25	8	9 236 642 00	Pc	13000	69*
9	Ø4.0 x 30	8	9 236 643 00	Pc	11000	85*
10	Ø4.0 x 35	8	9 236 644 00	Pc	10000	97
11	Ø4.0 x 40	8	9 215 113 00	Pc	8000	86
12	Ø5.0 x 50	10	9 215 114 00	Pc	4500	157*

### Blackodised Pan head–Retail Packing



Material: Steel  
 Finish: Blackodised  
 Head: Pan head  
 Drive: Pozi Drive  
 Thread: Regular  
 Packing: Retail

S.no.	Dimension	Article no.	Unit	PU	MRP/100
1	Ø3.5x12	5 412 220 40	Pc	1000	62
2	Ø3.5x16	5 412 220 50	Pc	1000	77
3	Ø4 x 16	5 412 221 20	Pc	1000	94
4	Ø4 x 20	5 412 221 30	Pc	1000	102
5	Ø4 x 25	5 412 221 40	Pc	1000	113
6	Ø4 x 30	5 412 221 50	Pc	500	127

### Blackodised Countersunk–Retail Packing



Material: Steel  
 Finish: Blackodised  
 Head: Countersunk  
 Drive: Pozi Drive  
 Thread: Regular  
 Packing: Retail

S.no.	Dimension	Article no.	Unit	PU	MRP/100
1	Ø3 X16	5 412 120 30	Pc	1000	48*
2	Ø3.5x12	5 412 120 40	Pc	1000	49*
3	Ø3.5x16	5 412 120 50	Pc	1000	60
4	Ø3.5x20	5 412 120 60	Pc	1000	63
5	Ø3.5x25	5 412 120 70	Pc	1000	66
6	Ø3.5x30	5 412 120 80	Pc	1000	74
7	Ø3.5x35	5 412 120 90	Pc	1000	82
8	Ø4.0 x 16	5 412 121 20	Pc	1000	66
9	Ø4.0 x 20	5 412 121 30	Pc	1000	74
10	Ø4.0 x 25	5 412 121 40	Pc	1000	82
11	Ø4.0 x 30	5 412 121 50	Pc	1000	96
12	Ø4.0 x 35	5 412 121 60	Pc	500	109
13	Ø4.0x40	5 412 121 70	Pc	500	121
14	Ø4.0 x 45	5 412 121 80	Pc	500	131*
15	Ø4.0 x 50	5 412 121 90	Pc	500	146
16	Ø5.0x50	5 412 122 30	Pc	200	231
17	Ø5.0 x 60	5 412 122 40	Pc	200	268
18	Ø5.0 x 70	5 412 122 50	Pc	200	313

### Blackodised Pan head\*–Industrial Packing



Material: Steel  
 Finish: Blackodised  
 Head: Pan head  
 Drive: Pozi Drive  
 Thread: Regular  
 Packing: Industrial

S.no.	Dimension	Gauge	Article no.	Unit	PU	MRP/100
1	Ø3.5 x 12	6	9 215 115 00	Pc	22000	43
2	Ø3.5 x 16	6	9 215 116 00	Pc	20000	45
3	Ø3.5 x 25	6	9 215 127 00	Pc	15000	56
4	Ø4 x 16	8	9 236 646 00	Pc	15000	73
5	Ø4 x 20	8	9 236 647 00	Pc	12000	82
6	Ø4 x 25	8	9 236 648 00	Pc	10000	91
7	Ø4 x 30	8	9 236 649 00	Pc	9000	105
8	Ø4 x 35	8	9 236 650 00	Pc	8000	114
9	Ø4 x 40	8	9 236 651 00	Pc	7000	126
10	Ø4 x 50	8	9 236 652 00	Pc	5,500	149

\*Subject to stock availability/ on request basis

# Hettich Countersunk Screws

## Zinc Saw Thread

### Zinc CSK Saw Thread – Retail Packing



Material: Steel  
 Finish: Zinc Coated  
 Head: Countersunk  
 Drive: Pozi Drive  
 Thread: Saw  
 Packing: Retail

S.no.	Dimension	Gauge	Article no.	Unit	PU	MRP/100
1	Ø3 x 10	5	9 169 369 00	Pc	1000	62*
2	Ø3 x 12	5	9 162 378 00	Pc	1000	63
3	Ø3 x 16	5	9 169 370 00	Pc	1000	64
4	Ø3.5 x 12	6	9 148 092 00	Pc	1000	64
5	Ø3.5 x 16	6	9 137 980 00	Pc	1000	68
6	Ø3.5 x 20	6	9 153 820 00	Pc	1000	73
7	Ø3.5 x 25	6	9 162 379 00	Pc	1000	81
8	Ø3.5 x 30	6	9 162 380 00	Pc	1000	95
9	Ø3.5 x 35	6	9 169 371 00	Pc	1000	103
10	Ø3.5 x 40	6	9 162 381 00	Pc	500	116
11	Ø4.0 x 12	8	9 169 372 00	Pc	1000	73
12	Ø4.0 x 16	8	9 137 992 00	Pc	1000	82
13	Ø4.0 x 20	8	9 137 991 00	Pc	1000	86
14	Ø4.0 x 25	8	9 137 993 00	Pc	1000	97
15	Ø4.0 x 30	8	9 140 272 00	Pc	1000	112
16	Ø4.0 x 35	8	9 140 274 00	Pc	500	130
17	Ø4.0 x 40	8	9 140 275 00	Pc	500	141
18	Ø4.0 x 45	8	9 140 276 00	Pc	500	153
19	Ø4.0 x 50	8	9 169 373 00	Pc	500	165
20	Ø4.5 x 16	9	9 140 277 00	Pc	1000	97*
21	Ø4.5 x 20	9	9 169 374 00	Pc	1000	105*
22	Ø4.5 x 25	9	9 137 994 00	Pc	500	130*
23	Ø4.5 x 30	9	9 137 995 00	Pc	500	147*
24	Ø4.5 x 35	9	9 137 996 00	Pc	500	167*
25	Ø4.5 x 40	9	9 137 997 00	Pc	500	178*
26	Ø4.5 x 50	9	9 137 998 00	Pc	200	236
27	Ø5.0 x 50	10	9 148 093 00	Pc	200	297
28	Ø5.0 x 60	10	9 153 821 00	Pc	200	341
29	Ø5.0 x 70	10	9 153 822 00	Pc	200	407
30	Ø5.0 x 80	10	9 169 376 00	Pc	100	489
31	Ø5.0 x 90	10	9 169 378 00	Pc	100	588
32	Ø5.0 x 100	10	9 169 380 00	Pc	100	685

### Zinc CSK Saw Thread – Industrial Packing



Material: Steel  
 Finish: Zinc  
 Head: Countersunk  
 Drive: Pozi Drive  
 Thread: Saw  
 Packing: Industrial

S.no.	Dimension	Gauge	Article no.	Unit	PU	MRP/100
1	Ø3.5 x 12	6	9 200 221 00	Pc	28000	51
2	Ø3.5 x 16	6	9 200 222 00	Pc	25000	51
3	Ø3.5 x 20	6	9 200 223 00	Pc	20000	56
4	Ø4.0 x 16	8	9 200 224 00	Pc	17000	61
5	Ø4.0 x 20	8	9 200 225 00	Pc	15000	65
6	Ø4.0 x 25	8	9 200 226 00	Pc	13000	75
7	Ø4.0 x 30	8	9 200 227 00	Pc	10000	86
8	Ø4.0 x 35	8	9 200 228 00	Pc	9000	96
9	Ø4.0 x 40	8	9 200 229 00	Pc	8000	108*
10	Ø4.0 x 45	8	9 200 250 00	Pc	7500	120*
11	Ø4.5 x 45	9	9 200 251 00	Pc	6000	142*
12	Ø5.0 x 50	10	9 200 252 00	Pc	4500	194
13	Ø5.0 x 60	10	9 200 253 00	Pc	3200	221*
14	Ø5.0 x 70	10	9 200 254 00	Pc	2300	259*

### Zinc Pan head Saw Thread–Retail Packing



Material: Steel  
 Finish: Zinc Coated  
 Head: Pan head  
 Drive: Pozi Drive  
 Thread: Saw  
 Packing: Retail

S.no.	Dimension	Gauge	Article no.	Unit	PU	MRP/100
1	Ø3.0 x 12	6	9 169 381 00	Pc	1000	72
2	Ø3.0 x 16	6	9 169 382 00	Pc	1000	75
3	Ø3.5 x 12	6	9 169 383 00	Pc	1000	72
4	Ø3.5 x 16	6	9 169 384 00	Pc	1000	75
5	Ø3.5 x 20	6	9 169 385 00	Pc	1000	83
6	Ø4.0 x 16	8	9 137 999 00	Pc	1000	82
7	Ø4.0 x 25	8	9 140 282 00	Pc	1000	101
8	Ø4.0 x 30	8	9 169 386 00	Pc	500	130
9	Ø4.0 x 35	8	9 169 387 00	Pc	500	147
10	Ø4.0 x 40	8	9 169 388 00	Pc	500	162
11	Ø4.0 x 45	8	9 169 389 00	Pc	200	178
12	Ø4.0 x 50	8	9 169 390 00	Pc	200	196
13	Ø4.5 x 16	9	9 138 000 00	Pc	500	108
14	Ø4.5 x 20	9	9 138 021 00	Pc	500	118
15	Ø5.0 x 50	10	9 169 391 00	Pc	200	296
16	Ø6.0 x 35	12	9 169 392 00	Pc	200	339
17	Ø6.0 x 50	12	9 169 393 00	Pc	200	437

\*Subject to stock availability/ on request basis

# Hettich Screws

## Handle Fixing & Stainless Steel 410

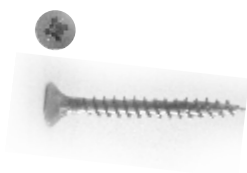
### Handle fixing screw–Retail Packing

Material Steel  
 Finish Zinc Coated  
 Head Pan head  
 Drive Cross recessed  
 Thread M4  
 Packing Retail



S.no.	Description	Dimension	Article no.	Unit	PU	MRP/100
1	Handle fixing screw	M4 x 20	7 154 8	Pc	1000	139
2	Handle fixing screw	M4 x 22	7 154 9	Pc	1000	143
3	Handle fixing screw	M4 x 24	7 155 5	Pc	1000	143
4	Handle fixing screw	M4 x 26	7 155 6	Pc	1000	154
5	Handle fixing screw	M4 x 28	7 155 7	Pc	500	165
6	Handle fixing screw	M4 x 30	7 155 8	Pc	500	165
7	Handle fixing screw	M4 x 32	7 155 9	Pc	500	176
8	Handle fixing screw	M4 x 34	7 156 0	Pc	500	187
9	Handle fixing screw	M4 x 36	7 156 1	Pc	500	198
10	Handle fixing screw	M4 x 38	7 156 2	Pc	500	209
11	Handle fixing screw	M4 x 40	7 156 3	Pc	200	220*
12	Handle fixing screw	M4 x 50	9 184 222	Pc	200	252

### Stainless Steel CSK Saw Thread–Retail Packing



Material SS 410  
 Finish Stainless Steel  
 Head Countersunk  
 Drive Pozi Drive  
 Thread Saw  
 Packing Retail

S.no.	Dimension	Gauge	Article no.	Unit	PU	MRP/100
1	Ø3.5 x 12	6	9 162 382 00	Pc	1000	107
2	Ø3.5 x 16	6	9 154 452 00	Pc	1000	121
3	Ø3.5 x 20	6	9 162 383 00	Pc	1000	139
4	Ø3.5 x 25	6	9 162 384 00	Pc	1000	169
5	Ø3.5 x 30	6	9 162 385 00	Pc	1000	183
6	Ø3.5 x 35	6	9 162 386 00	Pc	1000	214
7	Ø4.0 x 16	8	9 162 388 00	Pc	1000	154
8	Ø4.0 x 20	8	9 154 453 00	Pc	1000	176
9	Ø4.0 x 25	8	9 154 454 00	Pc	1000	209
10	Ø4.0 x 30	8	9 154 455 00	Pc	1000	242
11	Ø4.0 x 35	8	9 154 456 00	Pc	500	264
12	Ø4.0 x 40	8	9 162 389 00	Pc	500	315
13	Ø4.5 x 45	9	9 154 458 00	Pc	500	429*
14	Ø5.0 x 50	10	9 154 459 00	Pc	200	592
15	Ø5.0 x 60	10	9 169 394 00	Pc	200	726
16	Ø5.0 x 70	10	9 154 461 01	Pc	200	760

\*Subject to stock availability/ on request basis



# Hettich Screws

## Euro Countersunk, Hardware Fixing

### Euro Countersunk head\*–Retail Packing

Material            Steel  
 Finish             Zinc Coated  
 Head                Shallow Countersunk  
 Drive                Pozi Drive  
 Packing             Retail



S.no.	Description	Dimension	Gauge	Article no.	Unit	PU	MRP/100
1	Shallow Countersunk head	Ø4.5 x 13.5	6	7 375 1	Pc	200	445
2	Shallow Countersunk head	Ø6.3 x 10.5	6	5 126 4	Pc	200	277
3	Shallow Countersunk head	Ø6.3 x 11	6	4 745 1	Pc	200	160
4	Shallow Countersunk head	Ø6.3 x 12.5	6	7 375 2	Pc	200	168
5	Shallow Countersunk head	Ø6.3 x 14	6	5 126 5	Pc	200	182
6	Shallow Countersunk head	Ø6.3 x 15	6	7 388 9	Pc	200	652
7	Shallow Countersunk head	Ø6.3 x 18	8	5 279 9	Pc	200	674
8	Deep Countersunk head	Ø6.3 x 10.5	8	7 389 0	Pc	200	606
9	Deep Countersunk head	Ø6.3 x 14	8	4 745 2	Pc	200	215

### Hettich Hardware Fixing Screws\*–Retail Packing

Material            Steel  
 Finish             Zinc Coated / Nickel Plated  
 Head                Countersunk / Pan head  
 Drive                Pozi Drive  
 Packing             Retail

S.no.	Description	Image	Dimension	Article no.	Unit	PU	MRP/100
1	Screw Countersunk and sleeve for socket adoption.		Ø 10 x 11	4 516 9	Set	1000	683
2	Chipboard Screw Countersunk Head		Ø 3.5 x 16	7 192 5	Nos	200	174
3	Fixing Screw for Alu profile frame door hinges		Ø 3.5 x 9.5	4 129 6	Nos	200	178
4	Fixing Screw for glass door hinges		Ø 4.0 x 16	9 082 429	Nos	200	560
5	Fixing screw, Countersunk head steel nickel plate		Ø 4.0 x 12	1 008 5	Nos	200	234

\*Subject to stock availability/ on request basis

# Hettich Screws

Rear Panel Fixing, CSK Nickel, Wooden Dowel & Suspension hook


## Rear Panel Fixing Screw –Retail Packings

Material	Steel
Finish	Zinc Coated / Nickel Plated
Head	Countersunk / Pan head
Drive	Pozi Drive
Packing	Retail

S.no.	Description	Image	Dimension	Article no.	Unit	PU	MRP/100
1	Direct fixing screw Pan head, Nickel		Ø6.3 x 13	4 000 7	Pc	200	282
2	Chipboard screw CSK galvanised		Ø3.5 x 12	5 824 4	Pc	200	157
3	Direct fixing screw Pan head		Ø4.0 x 12	5 824 3	Pc	200	348
4	Direct fixing screw Oval head, polished		M6 x 12	5 824 2	Pc	200	945




## Countersunk Nickel–Retail Packing

Material	Steel
Finish	Galvanised / Nickel
Head	Countersunk
Packing	Retail

S.no.	Description	Image	Dimension	Article no.	Unit	PU	MRP/100
1	Countersunk, Nickel		Ø3.5 x 13	0 048 296	Pc	200	155
2	Countersunk, Nickel		Ø3.5 x 16	7 192 5	Pc	200	174
3	Countersunk, Nickel		Ø3.5 x 9.5	4 129 6	Pc	200	178
4	Countersunk, Nickel		Ø4.0 x 16	1 008 5	Pc	200	234

## Dowel & Suspension hook–Retail Packing

Material	Plastic / Steel / Wood
Finish	White
Packing	Retail

S.no.	Description	Image	Dimension	Article no.	Unit	PU	MRP/100
1	Wooden Dowel		Ø 8.0 x 40	6 924 1	Pc	2000	92
2	Suspension hook Wall Plug		Ø 6.0 x 50 Ø 8.0 x 40	4 610 3	Pc	100	1569
3	Special screw Wall plug		Ø 5.5 x 50 Ø 8.0 x 40	6 548 0	Pc	100	1846

# HECO-FIX-plus® screws

## Countersunk, Pan head, Multi Monti Screw

### Zinc Countersunk Full Thread-Retail Packing



Material: Steel hardened  
 Finish: Bright zinc plated  
 Head: Countersunk  
 Drive: Pozi Drive  
 Packing: Retail

S.no.	Dimension	Gauge	Article no.	Unit	PU	MRP/100
1	Ø3.0 x 10	6	1 180 176 91	Pc	1000	156*
2	Ø3.0 x 12	6	916 300 400	Pc	1000	156*
3	Ø3.5 x 16	6	1 180 023 00	Pc	1000	154
4	Ø3.5 x 20	6	9 163 005 00	Pc	1000	168
5	Ø3.5 x 25	6	1 180 021 00	Pc	1000	178*
6	Ø3.5 x 30	6	1 180 022 00	Pc	1000	193*
7	Ø4.0 x 12	8	1 180 125 00	Pc	1000	181*
8	Ø4.0 x 16	8	1 180 151 00	Pc	1000	181
9	Ø4.0 x 20	8	1 180 168 00	Pc	1000	198
10	Ø4.0 x 25	8	1 180 169 00	Pc	1000	220
11	Ø4.0 x 30	8	1 180 017 00	Pc	1000	242
12	Ø4.0 x 35	8	1 180 171 00	Pc	500	286
13	Ø4.0 x 40	8	1 180 026 00	Pc	500	308*
14	Ø4.0 x 45	8	1 180 019 00	Pc	500	352*
15	Ø4.0 x 50	8	1 180 018 00	Pc	500	399
16	Ø4.5 x 20	9	1 180 028 00*	Pc	1000	265*
17	Ø4.5 x 25	9	1 180 446 47*	Pc	500	299*
18	Ø4.5 x 30	9	1 180 159 51*	Pc	500	318*
19	Ø4.5 x 40	9	1 180 162 14*	Pc	500	374*
20	Ø4.5 x 45	9	1 180 167 95*	Pc	500	495*
21	Ø4.5 x 50	9	1 180 152 99*	Pc	200	508*
22	Ø4.5 X 55	9	1 180 160 87*	Pc	200	768*
23	Ø4.5 x 60	9	1 180 160 87*	Pc	200	654*
24	Ø4.5 x 70	9	1 180 169 58*	Pc	200	894*
25	Ø5.0 x 50	10	9 222 042 00	Pc	200	593
26	Ø5.0 x 70	10	1 180 016 00	Pc	200	934
27	Ø5.0 x 90	10	9 155 414 00	Pc	200	1349
28	Ø6.0 x 40	10	1 180 020 00	Pc	200	886*

### Zinc Pan head Full Thread\* -Retail Packing



Material: Steel hardened  
 Finish: Bright zinc plated  
 Head: Pan head  
 Drive: Pozi Drive  
 Thread: Saw  
 Packing: Retail

S.no.	Dimension	Gauge	Article no.	Unit	PU	MRP/100
1	Ø3.5 x 12	6	1 180 12600	Pc	1000	187
2	Ø4.0 x 12	8	1 180 068 38	Pc	1000	212
3	Ø4.0 x 15	8	1 180 114 00	Pc	1000	212
4	Ø4.0 x 16	8	1 180 115 00	Pc	1000	198
5	Ø4.0 x 20	8	1 180 117 00	Pc	1000	220
6	Ø4.0 x 25	8	1 180 072 70	Pc	1000	242
7	Ø4.0 x 30	8	1 180 148 00	Pc	1000	268
8	Ø4.5 x 16	9	1 180 445 97	Pc	500	280
9	Ø4.5 x 20	9	1 180 446 02	Pc	500	308
10	Ø4.5 x 25	9	1 180 446 06	Pc	500	336
11	Ø4.5 x 40	9	9 145 700 00	Pc	500	418
12	Ø4.5 x 45	9	9 145 731 00	Pc	500	549
13	Ø5.0 x 70	12	9 259 692 00	Pc	200	1100

### Multi-Monti+ SS Hexagon head Screws\*



Material: Steel, Hardened  
 Finish: Bright Zinc Plated  
 Head: Hexagonal  
 Drive: T-Drive  
 Packing: Retail

S.no.	Dimension	Article no.	Unit	PU	MRP/PC
1	7.5 x 80	925262900	Pc	50	61
2	7.5 x 100	925263000	Pc	50	66
3	7.5 x 120	925263100	Pc	50	70
4	7.5 x 140	925263200	Pc	50	87

### Multi-Monti-Plus F Countersunk head Screws\*



Material: Steel, Hardened  
 Finish: Bright Zinc Plated  
 Head: Countersunk  
 Drive: T-Drive  
 Packing: Retail

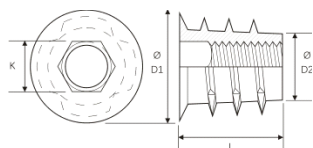
S.no.	Dimension	Article no.	Unit	PU	MRP/PC
1	7.5 x 80	9 244 974 00	Pc	50	49
2	7.5 x 100	9 244 975 00	Pc	50	54
3	7.5 x 120	9 244 976 00	Pc	50	68
4	7.5 x 140	9 244 977 00	Pc	50	85
5	7.5 x 160	9 245 018 00	Pc	50	91

\*Subject to stock availability/ on request basis

# Wood Insert / Nut Connector

## Insert Hex socket ,T Nut & Connector

### Insert Hex socket \*

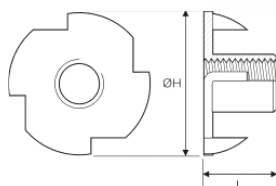


Material  
Finish  
Drive  
Thread  
Packing

Steel  
Zinc  
Hex Socket  
Regular / Metric  
Bulk

S.no.	Description	Dimension	Article no.	Unit	PU	MRP/100
1	Insert Hex	M 6 X 9	5 211 634 61	Pc	11000	561
2	Insert Hex	M 6 X 12	5 211 634 71	Pc	9000	584
3	Insert Hex	M 6 X 15	5 211 634 91	Pc	6600	821
4	Insert Hex	M 6 X 20	5 211 635 11	Pc	5000	991
5	Insert Hex	M6 X 25	5 211 635 21	Pc	3000	1,575
6	Insert Hex	M8 X 15	5 211 636 71	Pc	5000	1,056
7	Insert Hex	M8 X 20	5 211 636 81	Pc	3000	1,664
8	Insert Hex	M8 X 25	5 211 636 91	Pc	2800	1,801

### T Nut\*



Material  
Finish  
Drive  
Packing

Steel  
Zinc  
Metric  
Retail

S.no.	Description	Dimension	Article no.	Unit	PU	MRP/100
1	T Nut Ø19	M 6 x 9	5 211 034 60	Pc	5500	294
2	T Nut Ø 22	M8 x 12	5 211 036 60	Pc	3500	419

### Hettich Connector

Material: Steel / Plastic  
Finish: Galvanised / White- Brown  
Head: Plastic  
Drive: Slot / Pozidrive  
Thread: M4 / M6  
Packing: Retail

S.no.	Description	Image	Dimension	Article no.	Unit	PU	MRP/100
1	VS 29 brown Ø 8 M6		29 - 36	1 310 9	Nos	100	1220
2	VS 34 white Ø 8 M6		34 - 41	1 311 0	Nos	100	1286
3	VS 34 brown Ø 8 M6		34 - 41	1 311 1	Nos	100	1200
4	VS 39 brown Ø 8 M6		39 - 46	1 311 3	Nos	100	1378
5	VS 39 white Ø 8 M6		39 - 46	1 311 2	Nos	100	1671
6	VS 44 white Ø 8 M6		44 - 51	1 311 4	Nos	100	2200
7	VS 44 brown Ø 8 M6		44 - 51	1 311 5	Nos	100	1371
8	Connecting screw VHS 32 M4, panel thickness 28-36		Ø 5 mm	7 965 9	Nos	1000	554
9	Connecting screw VHS 32 M4, panel thickness 36-44		Ø 5 mm	7 966 0	Nos	1000	739
10	End screw		M4 x 8	7 952 5	Nos	200	192
11	Thread sleeve, Ø 5		M4 x 15	6 301 6	Nos	200	563
12	Thread sleeve, Ø 5		M4 x 18	6 490 8	Nos	200	929
13	Thread sleeve, Ø 5		M4 x 22	6 301 7	Nos	200	852
14	Direkta, 2 saw thread		Ø6.3 x 40	1 955 5	Nos	500	542
15	Direkta, 2saw thread		Ø6.3 x 50	1 955 6	Nos	500	395

\*Subject to stock availability/ on request basis

# Hepo Accessories

## Drill Bit & Screw Driver

### Screw-Driver-Bit Pozidrive



Material  
Finish  
Drive

Steel hardened  
Black  
Pozi Drive

S.no.	Description	Article no.	Unit	PU	MRP/PC
1	Pozi Drive Size 1	9 153 723 00	Pc	10	170
2	Pozi Drive Size 2	9 153 726 00	Pc	10	170
3	Pozi Drive Size 3	9 153 727 00	Pc	10	170

### Long Drill Bit- 65 mm ( both side)



Material  
Finish  
Drive

Steel hardened  
Black  
Pozi Drive

S.no.	Description	Article no.	Unit	PU	MRP/PC
1	PZD -1 Screwdrive bits H1/4*65mm*PZ2*PZ	925467100	Pc	10	80
2	PZD -2 2Screwdrive bits H1/4*65mm*PZ2*PZ	925467200	Pc	10	80
3	PZD -3 2Screwdrive bits H1/4*65mm*PZ2*PZ 2	925467300	Pc	10	80

### Screw Driver



Material  
Drive

Steel / Plastic  
Pozi Drive

S.no.	Description	Dimension	Article no.	Unit	PU	MRP/PC
1	Screw Driver	PZ 2	9 193 260 00	Pc	1	200

#### Notes :

1. This price circular supersedes all previous price lists.
2. All MRP mentioned in the price list are inclusive of GST.
3. MRP are subject to change at any time without prior notice
4. All Dimensions mentioned are in MM.

# Conversion Chart- Imperial System to Metric System

## Screw Size in Gauge & Inch to mm

Diameter		Length	
Gauge No.	In mm	Inch	In mm
2	2	1/4	6
3	2.5	3/8	10
4	3	1/2	12
5	3	5/8	16
6	3.5	3/4	20
7	4	1	25
8	4	1 1/4	30
9	4.5	1 1/2	40
10	5	1 3/4	45
12	5.5	2	50
12	6	2 1/4	55
14	8	2 1/2	60

\* Note: There is tradition of telling dia in gauge & Length in Inch.



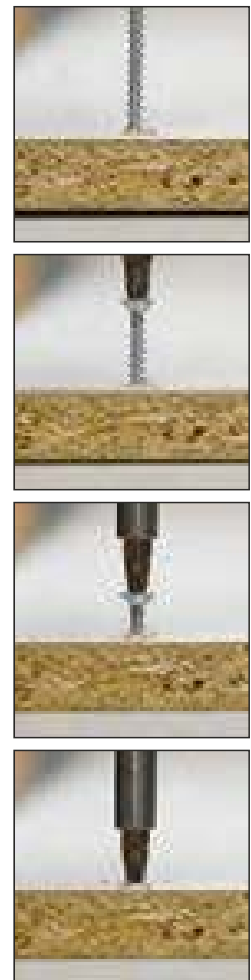
2 3/4	70
3	75
3 1/2	90
4	100
4 1/2	110
5	130
6	150



## Applications



# Contraction Effects





**Registered Office:**  
**Hepo India Private Ltd.**  
A-26/4, 1st floor,  
Mohan Co-operative Industrial Estate,  
New Delhi - 110 044  
Phone: +91 11 4889 4000, 4889 4005  
Fax: +91 11 4889 4044

**Head Office:**  
**Hepo India Private Ltd.**  
402 / 4th Floor, Duro-lite House,  
Opp.- SAB TV, New Link Road,  
Andheri (West), Mumbai - 400 053  
Phone: +91 22 2674 3289/3356/4089  
Fax: +91 22 2674 3267

Toll Free: 1800 209 2096 (office hours)  
[www.hepoindia.com](http://www.hepoindia.com)  
[customer\\_services@hepoindia.com](mailto:customer_services@hepoindia.com)

**hepo**  
FASTENERS

A Hettich & Poddar JV

